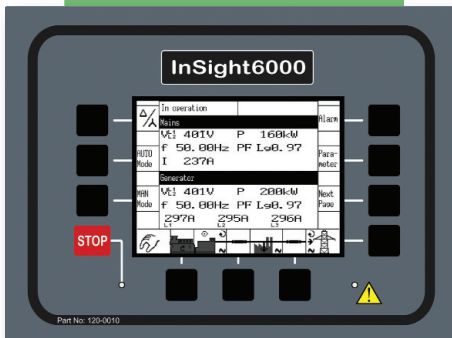
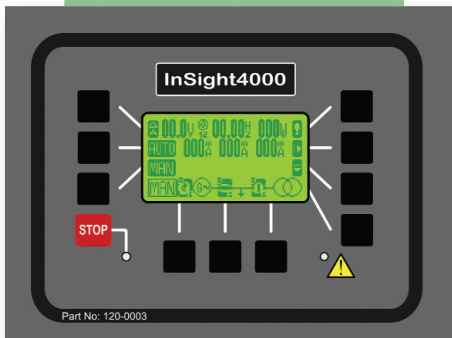
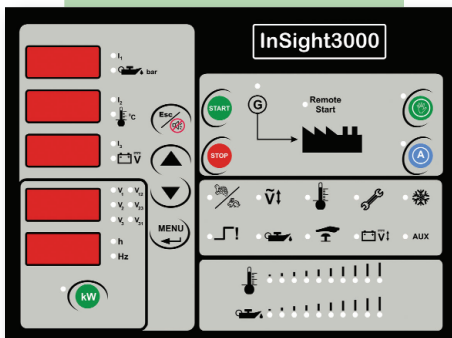


Performance is our prime objective

## inSight Control Systems Data Sheet



inSight Control Systems 3000 and 4000 are supplied as standard for the Gentec Energy GP range of Generating sets for Single Generator, Standby or Remote start applications.

As an option inSight 5000 and 6000 can be supplied to give additional control or monitoring options. Compare the additions on the chart overleaf.

**For Automatic Mains failure (AMF) applications** the inSight 5000 or 6000 will be supplied as standard.

**For Synchronising and parallel operation applications** the inSight 6000 will be supplied. This panel whilst providing an AMF function it will also provide the following controls for synchronising with other applicable generating sets and also with the Mains utility supply.

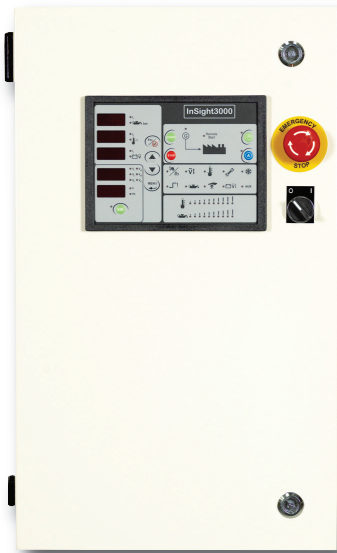
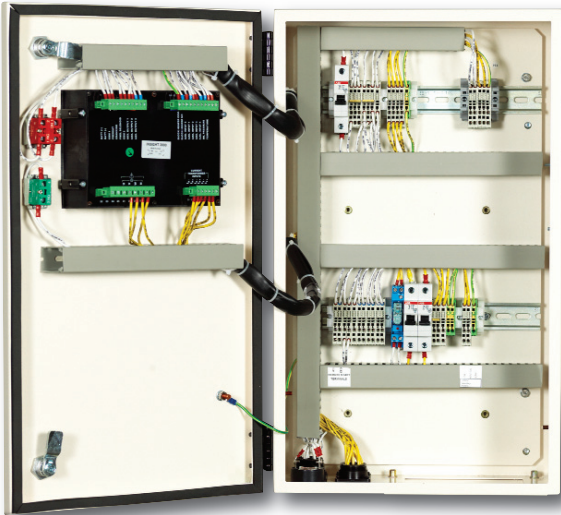
- Synchronisation with other applicable generating sets
- Synchronising with Mains utility supply
- Load dependent starting and stopping
- Load sharing with up to 32 other generating sets

The inSight Control system is innovative, flexible and gives the customer a wide choice for control of their generating set.

# inSight Control System

InSight is a new range of compact generating set control systems using state of the art technology. The system gives excellent functionality, flexibility and optional features such as event recording and remote monitoring.

This table shows an easy to compare layout of the main features of the InSight range



| inSight Control System  | 3000 | 4000 | 5000 | 6000 |
|---|------|------|------|------|
| <b>Application</b>  |      |      |      |      |
| Single Generator  | •    | •    | •    | •    |
| Standby   | •    | •    | •    | •    |
| Remote Start  | •    | •    | •    | •    |
| Automatic Mains Failure   |      |      | •    | •    |
| <b>Display Logic</b>  |      |      |      |      |
| LED Indication of parameter status  | •    |      |      |      |
| Digital display of measured parameters                                      | •    |      |      |      |
| LCD graphical display   |      | •    | •    | •    |
| <b>Generator parameter display</b>  |      |      |      |      |
| AC voltage (phase/phase & phase to Neutral)                                 | •    | •    | •    | •    |
| AC current (per phase)  | •    | •    | •    | •    |
| Frequency   | •    | •    | •    | •    |
| Power Factor  |      | •    | •    | •    |
| Power (kW)  | •    | •    | •    | •    |
| Power (kVA, KVAr) & Energy (kWh)  |      | •    | •    | •    |
| Engine coolant temp.  | •    | •    | •    | •    |
| Engine lube. Oil pressure.  | •    | •    | •    | •    |
| Battery voltage   | •    | •    | •    | •    |
| Start attempts  |      | •    | •    | •    |
| Hours run   | •    | •    | •    | •    |
| Tachometer  |      | •    | •    | •    |
| <b>Mains Supply Display</b>   |      |      |      |      |
| AC voltage (phase/phase & phase to Neutral)                                 |      |      | •    | •    |
| AC current - one phase  |      |      | •    | •    |
| Frequency   |      |      | •    | •    |
| Power (kVA, kW KVAr)  |      |      | •    | •    |
| <b>Operator Controls</b>  |      |      |      |      |
| Configuration via front panel   | •    | •    | •    | •    |
| Configuration via PC  |      | •    | •    | •    |
| Soft Keys (with functions that vary depending on application and operation) |      | •    | •    | •    |
| Multi level access via passwords  | •    | •    | •    | •    |
| Emergency stop lock down pushbutton   | •    | •    | •    | •    |
| <b>System control functions</b>   |      |      |      |      |
| Manual generator starting   | •    | •    | •    | •    |
| Remote generator starting   | •    | •    | •    | •    |
| Automatic generator starting  |      |      | •    | •    |
| Start Logic for engine  | •    | •    | •    | •    |
| Stop logic for engine   | •    | •    | •    | •    |
| Automatic on/off control of heaters   | •    | •    | •    | •    |
| <b>Communication</b>  |      |      |      |      |
| CAN interface   |      | •    | •    | •    |
| <b>Protection</b>   |      |      |      |      |
| Low oil pressure  | •    | •    | •    | •    |
| High coolant temp.  | •    | •    | •    | •    |
| Engine overspeed  | •    | •    | •    | •    |
| Fail to start   | •    | •    | •    | •    |
| Emergency stop  | •    | •    | •    | •    |
| Low battery voltage   | •    | •    | •    | •    |
| Battery charger system failure  |      | •    | •    | •    |
| <b>Synchronising and Parallel operation</b>                                 |      |      |      |      |
| Synchronising and mains Parallel operation                                  |      |      |      | •    |
| Load dependent start / stop   |      |      |      | •    |
| Load / var sharing for up to 32 participants                                |      |      |      | •    |